



Gordon Terrace, Mutley, Plymouth

8 Bedroom Student Property



4 Gordon Terrace

Approximate Gross Internal Area = 307.3 sq m / 3308 sq ft

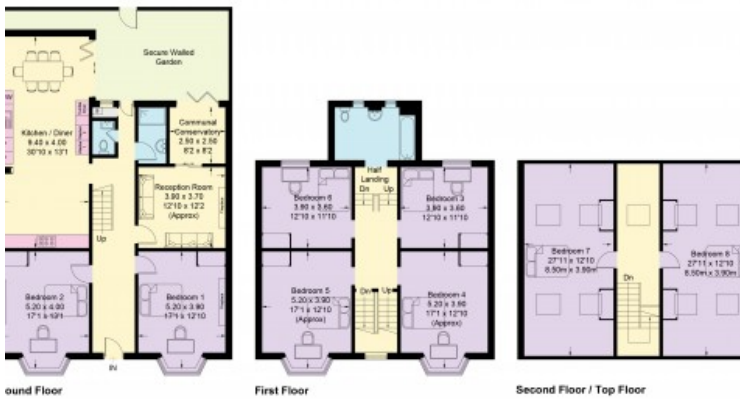
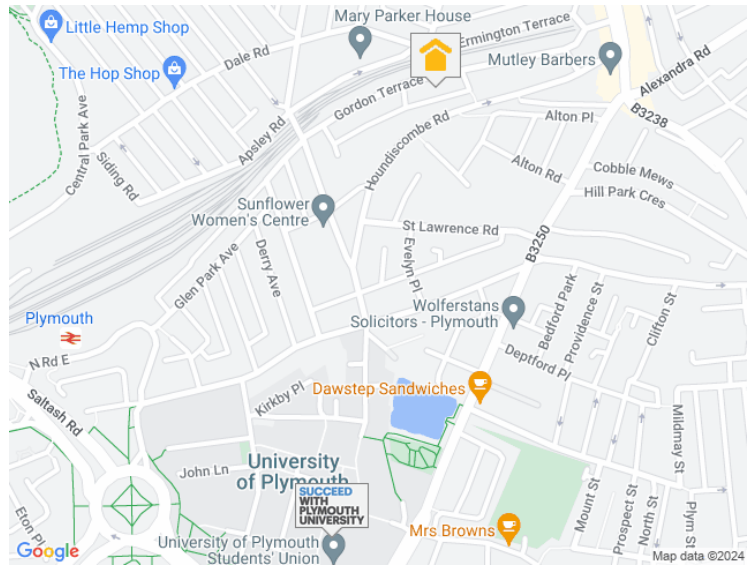


Illustration for identification purposes only, measurements are approximate, not to scale. floorplans.uk/sketch.com © (10486696)



Beautiful double fronted Victorian terrace house situated in a perfect location for everything you could ever wish for!

With a sumptuous blend of modern and period features this property is the complete package with natural wooden floor boards running throughout the downstairs bedrooms, living room and very spacious kitchen diner.

There are eight large bedrooms and two fully tiled bathrooms.

Room Availability

www.plymouthstudentaccommodation.com



A Home After Halls, 11-12 Gibbon Lane, Plymouth, Devon, PL4 8BR
contact@ahahlets.co.uk

01752 600 485